



DAMAC d.o.o.

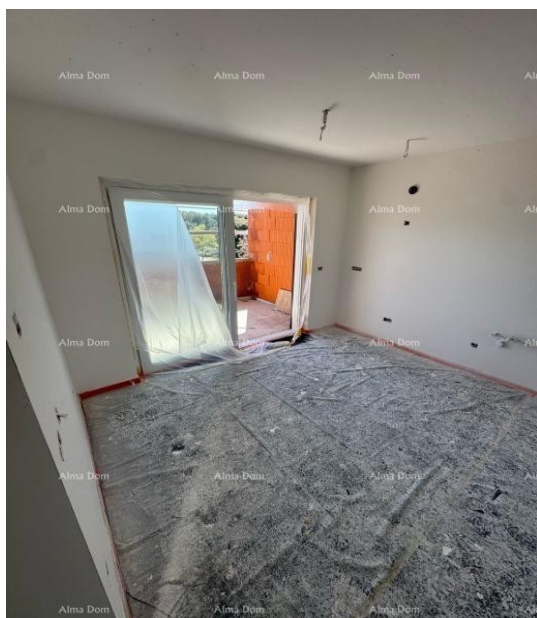
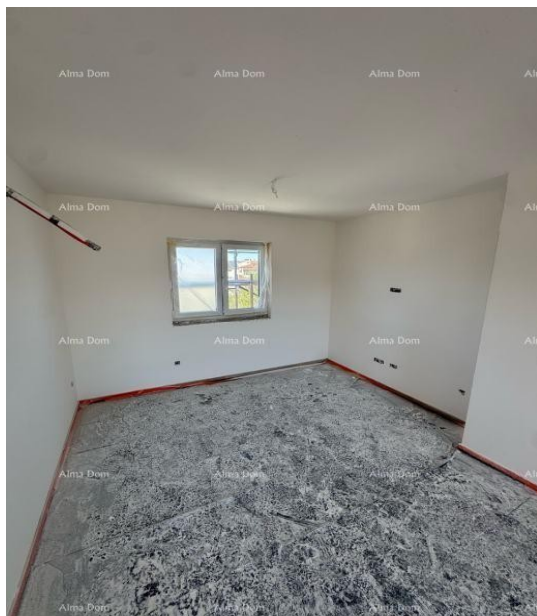
## ALMA DOM INVEST

Istarska ulica 8, 52100 Pula

mail: [azra@almadominvest.com](mailto:azra@almadominvest.com)

web: [www.almadominvest.com](http://www.almadominvest.com)

info: +44 7375 637471 | +385 98 420 885



|                                  |              |
|----------------------------------|--------------|
| <b>Code :</b>                    | 28335        |
| <b>Location :</b>                | Pula         |
| <b>Building size :</b>           | 58 m2        |
| <b>Lot size :</b>                | 0 m2         |
| <b>Distance from center :</b>    | 0 m          |
| <b>Distance from sea :</b>       | 0 m          |
| <b>Seaview :</b>                 | No           |
| <b>Floor :</b>                   | Ground floor |
| <b>Number of floors :</b>        | 3            |
| <b>Number of rooms :</b>         | 2            |
| <b>Number of bathrooms :</b>     | 1            |
| <b>Year of construction :</b>    | 2025         |
| <b>Energy efficiency :</b>       | A+           |
| <b>Parking :</b>                 | Yes          |
| <b>Air conditioning system :</b> | Yes          |

**Price :** 200.000 €

For sale is an apartment with an area of 58 m<sup>2</sup> located in a smaller residential building in Veliki Vrh.

The apartment is situated on the ground floor and has an accompanying garden, providing added value and the opportunity to enjoy the outdoors.

The building contains only three residential units, ensuring a high level of privacy and a pleasant atmosphere without noise and crowds.

The apartment has been carefully designed to maximize space and consists of two bedrooms, a bathroom, and an open living area that combines the kitchen, dining room, and living room, with access to a terrace.

Quality and long-term comfort were emphasized in the construction and furnishing – underfloor heating, an air conditioning unit for heating and cooling, and a chimney that allows for additional options such as a fireplace or stove have been installed. The apartment also comes with its own parking space.

The location is particularly suitable for family life – all essential amenities such as schools, kindergartens, shops, and clinics are within walking distance, while the sea and promenades are in close proximity.

Planned ...