



DAMAC d.o.o.

ALMA DOM INVEST

Istarska ulica 8, 52100 Pula

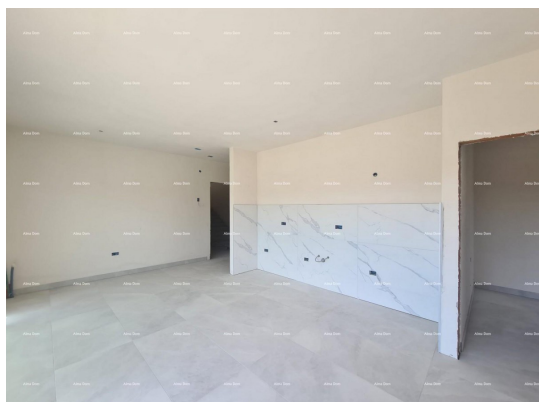
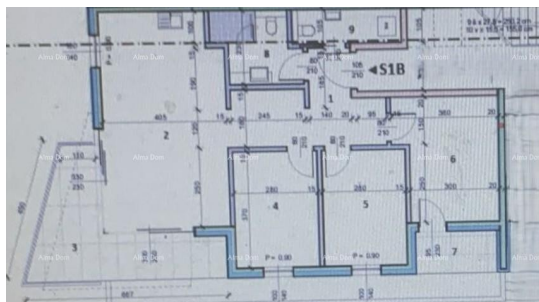
mail: azra@almadominvest.com

web: www.almadominvest.com

info: +44 7375 637471 | +385 98 420 885



Stan S1B - P = 97,40 m ²	
1 - ULAZNI PREDPROSTOR P = 10,75 m ² keramičke pločice	6 - SPAVAĆA SOBA P = 12,90 m ² gotovi troslojni parket
2 - DNEVNI BORAVAK P = 26,65 m ² gotovi troslojni parket	7 - NATKRIVENA TERASA P = 3,70 m ² keramičke pločice
3 - NATKRIVENA TERASA P = 13,35 m ² keramičke pločice	8 - KUPAONICA P = 5,00 m ² keramičke pločice
4 - SPAVAĆA SOBA P = 10,35 m ² gotovi troslojni parket	9 - ZAHOD P = 3,75 m ² keramičke pločice
5 - SPAVAĆA SOBA P = 10,35 m ² gotovi troslojni parket	



Code :	28389
Location :	Umag
Building size :	97.40 m ²
Lot size :	0 m ²
Distance from center :	1500 m
Distance from sea :	750 m
Seaview :	No
Floor :	Ground floor
Number of floors :	3
Number of rooms :	3
Number of bathrooms :	1
Year of construction :	2025
Energy efficiency :	Not specified
Parking :	Yes

Price : 438.300 €

UMAG - Lovrečica | Ground Floor Apartment S1B | New Construction in an Excellent Location

A modern apartment is for sale in a high-quality new building located in the quiet and exclusive neighborhood of Lovrečica, near Umag.

The property is situated in an attractive location that offers privacy, greenery, and a pleasant ambiance, while also being close to the sea and all essential amenities. The apartment is approximately 1.5 km from the center of Umag and just a few hundred meters from the coastline, making it ideal for everyday living, vacationing, or tourist rentals.

The apartment is located on the ground floor of a modern building with contemporary design. The complex consists of a total of 12 apartments and includes an underground garage with designated parking spaces. An additional value to this property is the heated swimming pool measuring 6 x 12 m located in front of the building.

The total area of the apartment is 97.40 m².

Apartment S1B consists of:

- Entrance hallway - 10.75 m²
- Living room - 26.65 m²
- Covered terrace - 13.35 m²
- Bedroom - 10.35 m²
- Bedroom - 10.35 m²
- B...