



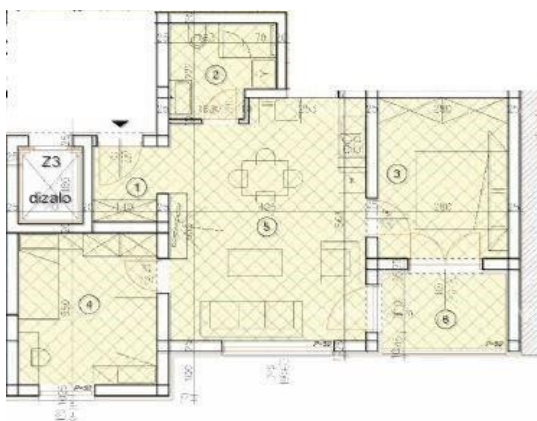
## ALMA DOM INVEST

Istarska ulica 8, 52100 Pula

mail: [azra@almadominvest.com](mailto:azra@almadominvest.com)

web: [www.almadominvest.com](http://www.almadominvest.com)

info: +44 7375 637471 | +385 98 420 885



<b>Code :</b>	28554
<b>Location :</b>	Medulin
<b>Building size :</b>	54.70 m <sup>2</sup>
<b>Lot size :</b>	0 m <sup>2</sup>
<b>Distance from center :</b>	700 m
<b>Distance from sea :</b>	300 m
<b>Seaview :</b>	No
<b>Floor :</b>	1
<b>Number of floors :</b>	4
<b>Number of rooms :</b>	2
<b>Number of bathrooms :</b>	1
<b>Year of construction :</b>	2026
<b>Energy efficiency :</b>	Not specified
<b>Parking :</b>	Yes
<b>Elevator :</b>	Yes

**Price :** 307.807 €

### \*\*Sale of Apartments in a New Residential Complex – Medulin\*\*

We offer apartments in a modern residential complex located in Medulin, one of the most attractive tourist micro-locations in southern Istria. The location, in close proximity to the sea, well-maintained beaches, and all key amenities, makes this project exceptionally desirable for living as well as a secure investment.

Thanks to its excellent position, there is a stable and long-term demand for tourist rentals, along with significant potential for property value growth.

The complex consists of a total of 8 buildings:

- Residential buildings
- Mixed-use residential-commercial buildings with business facilities on the ground floor

Part of the complex includes an underground garage, ensuring quality parking organization and preservation of outdoor space.

The project also encompasses:

- Well-maintained green areas
- Outdoor living zones
- Modern traffic and utility infrastructure

The concept is designed to meet the needs of long-term living as well as tourist rentals.



DAMAC d.o.o.

**ALMA DOM INVEST**

**Istarska ulica 8, 52100 Pula**

**mail: [azra@almadominvest.com](mailto:azra@almadominvest.com)**

**web: [www.almadominvest.com](http://www.almadominvest.com)**

**info: +44 7375 637471 | +385 98 420 885**

We offer an apartment with a total area of 54.70 m<sup>2</sup>, located on the 1st floor

...