



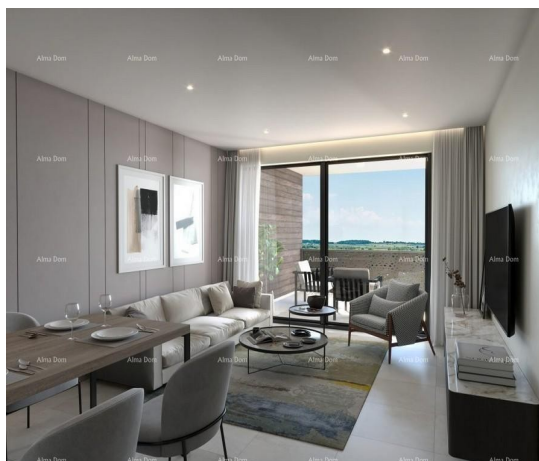
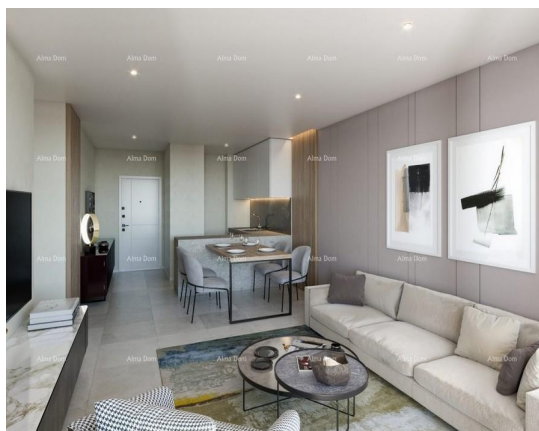
## ALMA DOM INVEST

Istarska ulica 8, 52100 Pula

mail: [azra@almadominvest.com](mailto:azra@almadominvest.com)

web: [www.almadominvest.com](http://www.almadominvest.com)

info: +44 7375 637471 | +385 98 420 885



<b>Code :</b>	29261
<b>Location :</b>	Umag
<b>Building size :</b>	71.70 m2
<b>Lot size :</b>	0 m2
<b>Distance from center :</b>	800 m
<b>Distance from sea :</b>	200 m
<b>Seaview :</b>	No
<b>Floor :</b>	2
<b>Number of floors :</b>	4
<b>Number of rooms :</b>	1
<b>Number of bathrooms :</b>	1
<b>Year of construction :</b>	2026
<b>Energy efficiency :</b>	A+
<b>Garage :</b>	Yes
<b>Parking :</b>	Yes
<b>Air conditioning system :</b>	Yes
<b>Elevator :</b>	Yes

**Price :** 264.600 €

New residential project in Umag!

A modernly designed complex located just 200 meters from the sea and in close proximity to the city center.

This new development offers 95 apartments spread over four floors, ranging from one-bedroom to three-bedroom units, ideal for family living, vacation, or investment.

The building is being constructed using high-quality materials that guarantee durability, comfort, and high energy efficiency (energy class A+). All apartments have their own terraces with views of the sea or the interior, and the design and layout of the spaces have been carefully planned to provide maximum functionality.

In addition to its attractive location, the project offers a range of modern technical solutions:

- Underfloor heating via a heat pump
- Cooling with fan-coils
- Aluminum joinery with triple glazing (excellent thermal and sound insulation)
- Quality sound and thermal insulation
- Wi-Fi throughout the building

Buyers have the option to purchase:

- An outdoor parking space - €20,000



DAMAC d.o.o.

**ALMA DOM INVEST**

**Istarska ulica 8, 52100 Pula**

**mail: [azra@almadominvest.com](mailto:azra@almadominvest.com)**

**web: [www.almadominvest.com](http://www.almadominvest.com)**

**info: +44 7375 637471 | +385 98 420 885**

- A garage parking space - €30,000

Apartment S12, with a total area of 71.7...